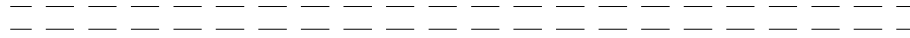


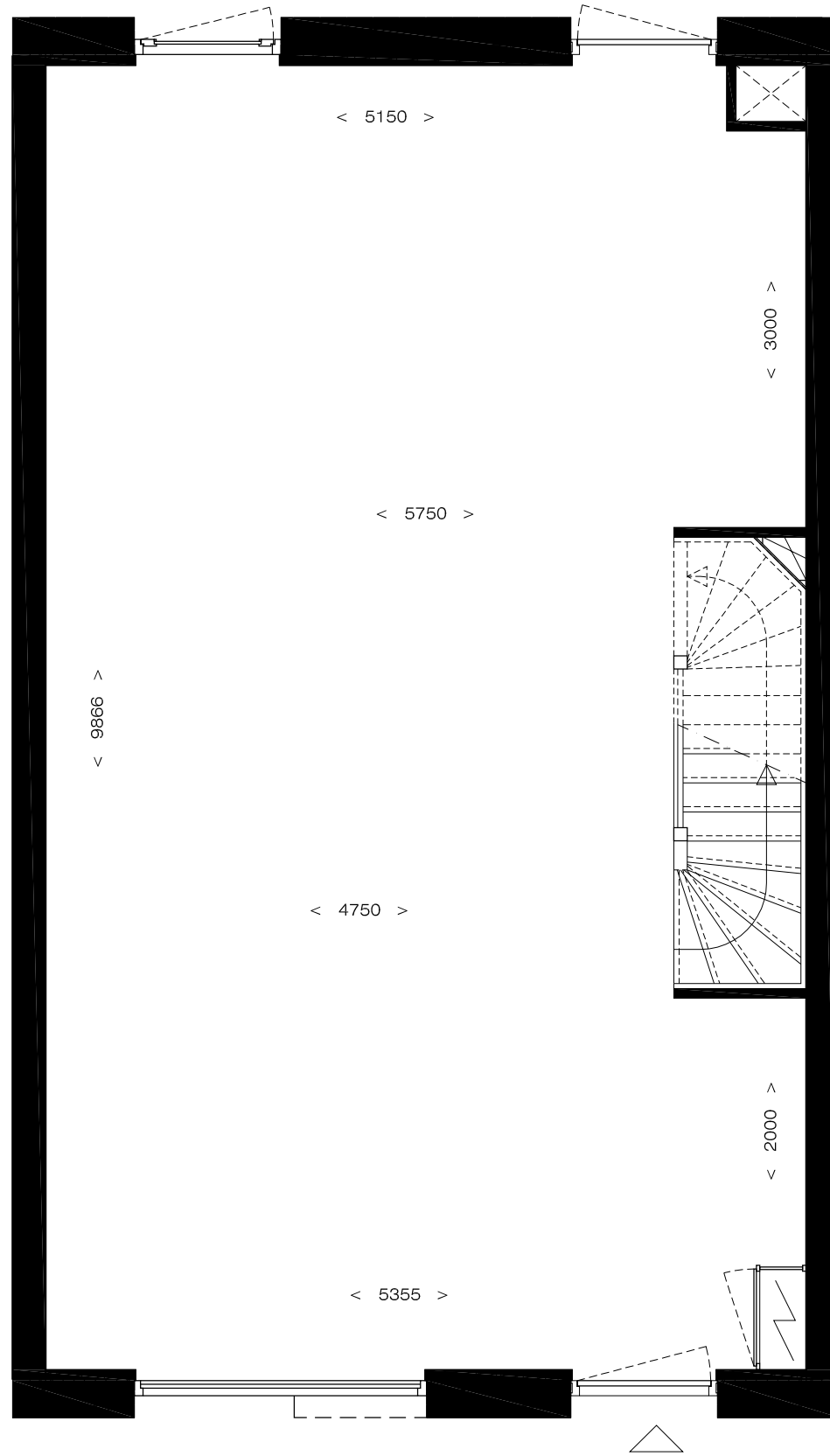


achterpad

Tuin



type D1a
begane grond



< 5150 >

>
3000
<

< 5750 >

>
9866
<

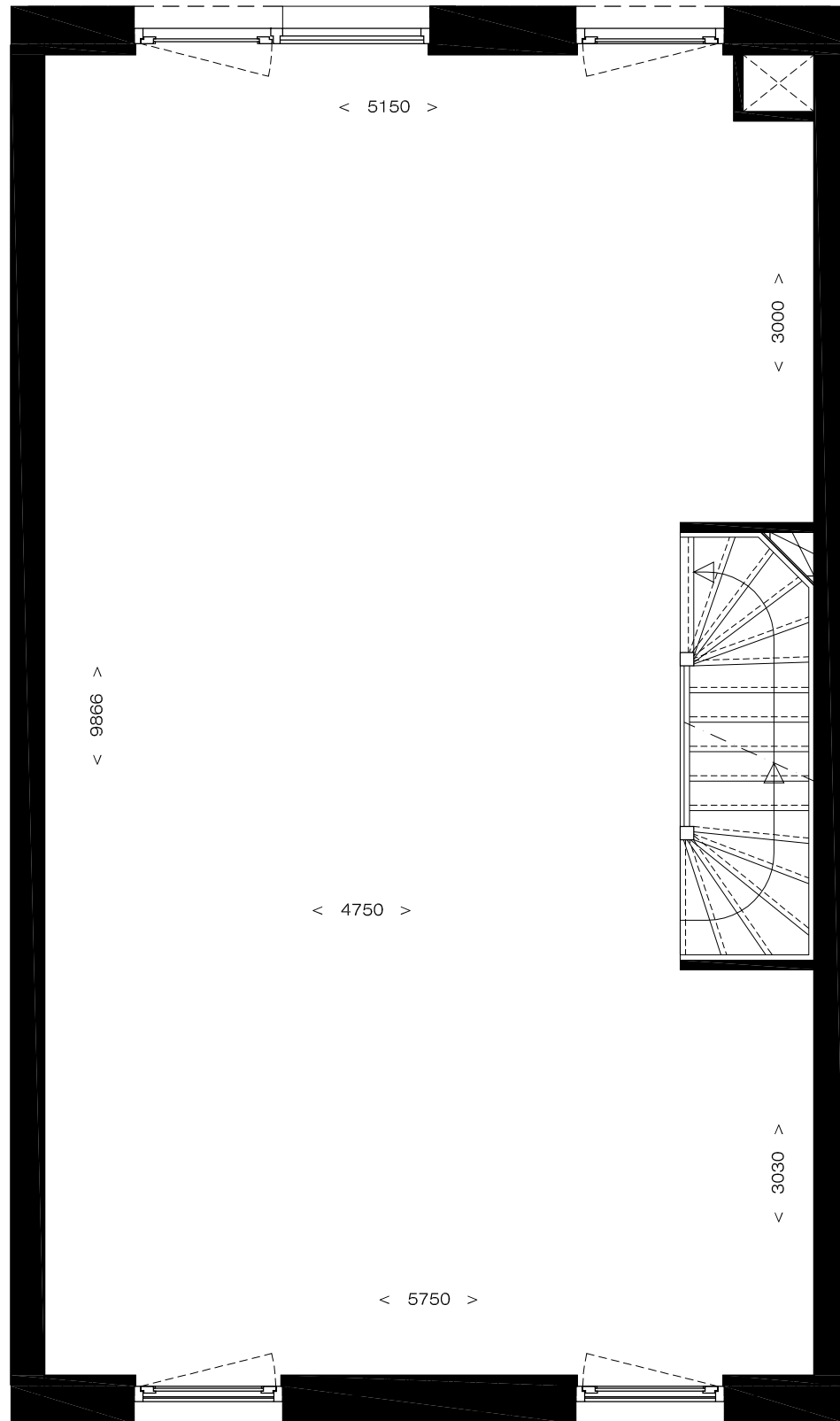
< 4750 >

>
2000
<

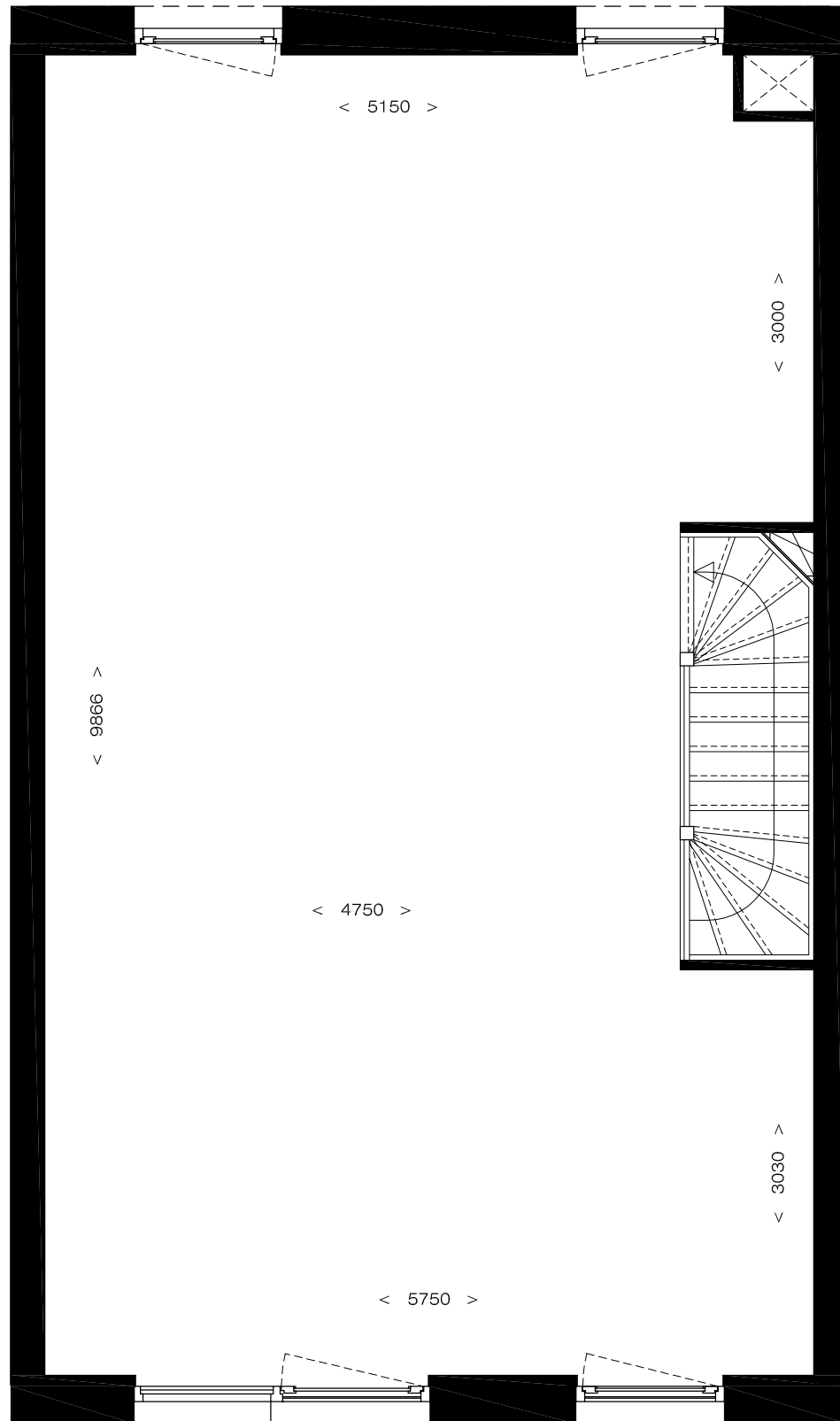
< 5355 >



type D1a
eerste verdieping



type D1a/b
tweede verdieping



9700 +p
▽

6230 +p
bk betonvloer
▽

6300 +p
bk te maken vloer
▽

3230 +p
bk betonvloer
▽

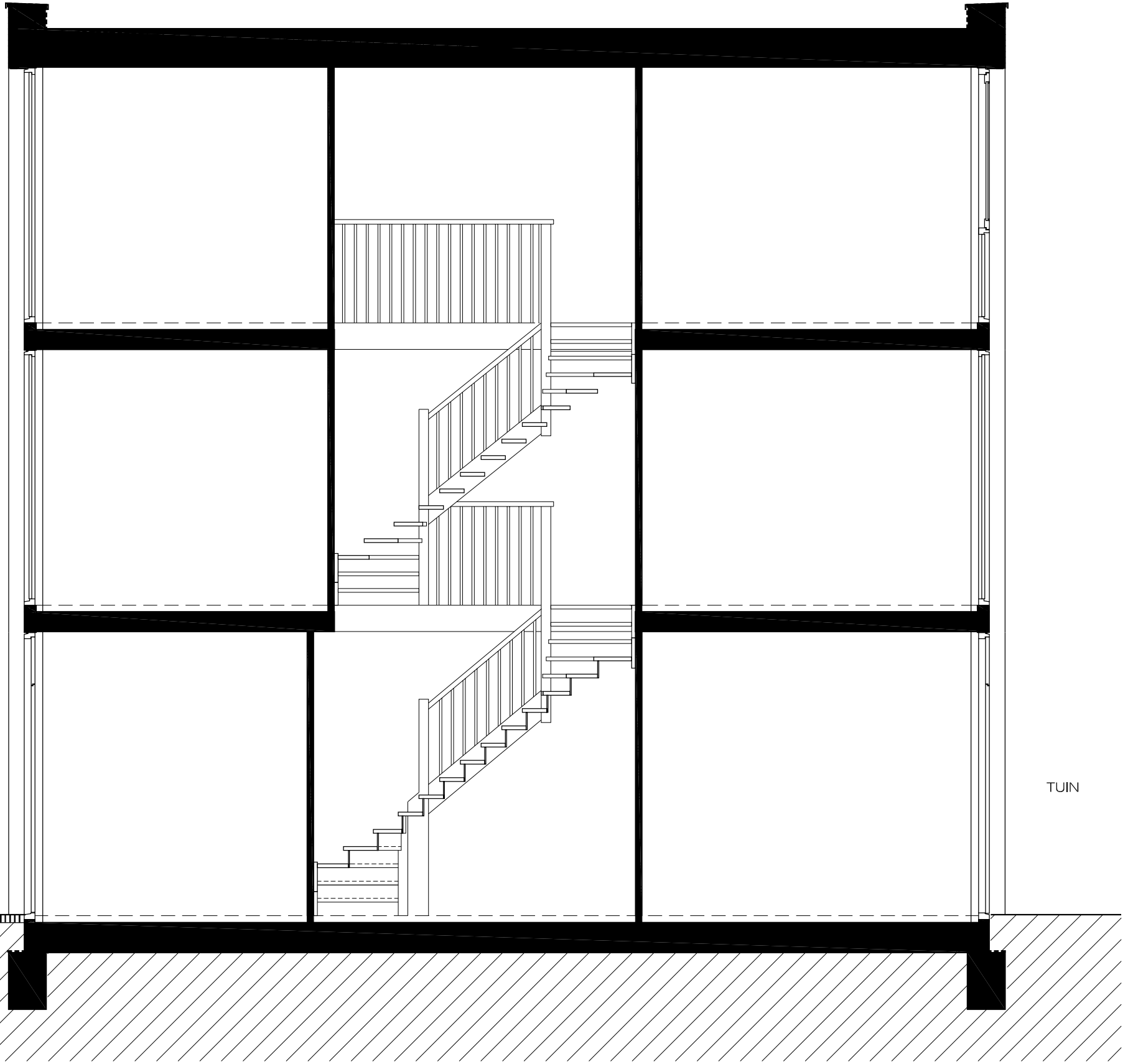
3300 +p
bk te maken vloer
▽

STRAAT

70 -p
bk betonvloer
▽

p = 0
bk te maken vloer
▽

TUIN



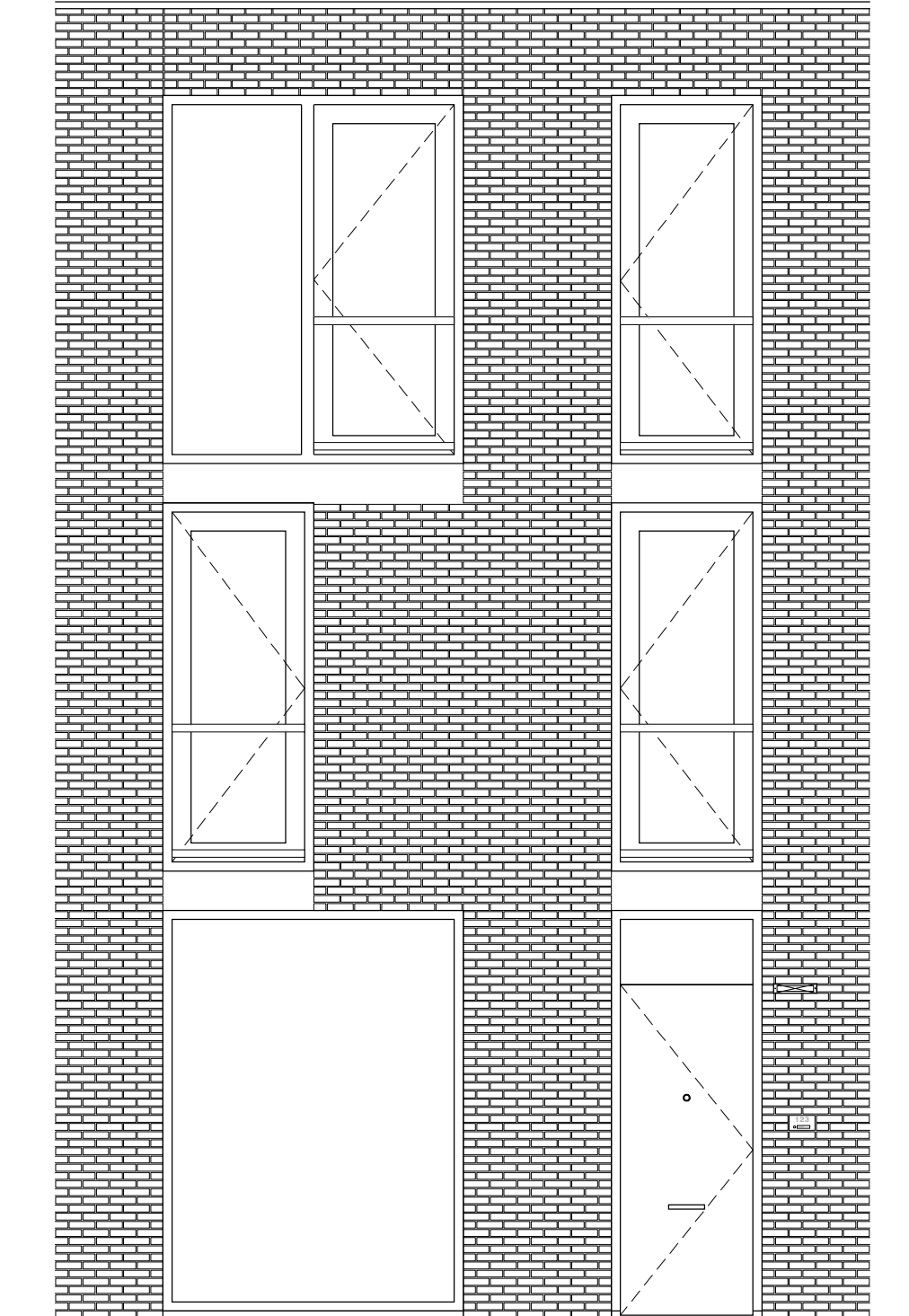
type D1a
voorgevel

9700 +p
▽

6230 +p
bk betonvloer
▽

3230 +p
bk betonvloer
▽

70 -p
bk betonvloer
▽



9700 +p
▽

6230 +p
bk betonvloer
▽

3230 +p
bk betonvloer
▽

70 -p
bk betonvloer
▽

